

GIGA

ALUFORMS

Blueprint to Brilliance

www.gigaalufoms.com



GIGA Aluforms

Company Profile

Your partner to elevate your construction experience with cutting-edge aluminum formwork systems.

Hi There!

Welcome to Giga Aluforms, where precision meets innovation in the dynamic realm of Aluminium formwork. As pioneers in the industry, we pride ourselves on delivering cutting-edge solutions that redefine construction methodologies. At Giga Aluforms, we seamlessly blend expertise with a commitment to excellence, offering a comprehensive suite of aluminum formwork solutions tailored to meet the unique needs of your projects.

Our unwavering dedication to quality craftsmanship and forward-thinking design positions Giga Aluforms as a trusted partner in your construction endeavors. With a focus on efficiency and sustainability, we strive to elevate construction practices through our state-of-the-art Aluformwork systems. Join us on a journey where each project is an opportunity to build not just structures but lasting relationships founded on reliability, innovation, and unparalleled punctual service.

About the Company

Welcome to **GIGA Aluforms**, a pioneering leader in the world of aluminum formwork technology and solutions. At the heart of the rapidly evolving construction industry, our company stands as a beacon of innovation, quality, sustainability and client relations. Founded with a vision to revolutionize building practices, **GIGA Aluforms** specializes in the design, manufacture, and distribution of state-of-the-art aluminum formwork systems.

Our expertise lies in providing cutting-edge solutions that cater to the diverse needs of modern construction. From high-rise buildings to intricate architectural projects, our aluminium formwork systems offer unparalleled efficiency, durability, and precision. We understand the dynamic demands of construction and respond with products that are not only cost-effective but also environmentally responsible.

At **GIGA Aluforms**, we are driven by a commitment to excellence. Our team of skilled engineers and professionals works tirelessly to push the boundaries of what's possible in the stipulated timeframe. Sustainability is at the core of our operations. We take pride in our ability to offer bespoke solutions, tailoring our systems to meet the specific requirements of each project. This client-centric approach ensures that we are not just suppliers but proud partners who wish nothing but our clients' enormous success.

Our journey is one of continuous innovation. We invest heavily in research and development to stay ahead of industry trends and technological advancements. By embracing new ideas and challenging conventional methods, **GIGA Aluforms** is setting new standards in the construction industry.

GIGA Aluforms is more than just a company – we are a movement towards a smarter, more efficient, and sustainable future in construction. We invite you to collaborate with us as we build the world of tomorrow, today.

Vision & Mission

Vision

Transforming the global construction landscape through innovative and sustainable aluminum formwork solutions, Giga Aluforms envisions a world where building projects are efficiently executed, environmentally responsible, and architecturally revolutionary, leading the industry towards a more sustainable, cost-effective, and time-efficient future.

Mission

Giga Aluforms is dedicated to revolutionizing the construction industry by providing state-of-the-art, eco-friendly aluminum formwork solutions. Our mission is to empower builders, developers and architects with superior quality, highly efficient, and customizable aluminium formwork systems that reduce construction time and cost, while promoting environmental sustainability. We are committed to continuous innovation, exceptional customer service, and fostering long-term symbiotic partnerships to build a more sustainable and efficient future in construction.

Values

Integrity | Dependability | Commitment | Trust

Our Team



Ankush Bambal

Director - Management & Ops

A visionary leader par excellence, Ankush brings a wealth of experience in smart manufacturing. His dynamic leadership style and strategic acumen have been instrumental in sculpting Giga's identity and trajectory. Ankush guides the company toward excellence. His commitment to advancing construction methodologies through cutting-edge technologies defines Giga Aluforms as a trailblazer in the field, ensuring each project benefits from unparalleled expertise under his astute leadership.



Ajinkya Gudadhe

Director - Sales & Marketing

Ajinkya, the director of Sales & Marketing at Giga, leads our sales and marketing initiatives in the dynamic realm of the Aluform industry. With a keen understanding of market trends and a passion for innovative marketing solutions, Ajinkya drives the company's growth by establishing strong client relationships. His commitment to excellence ensures that Giga Aluforms remains a leader in the industry, and delivers top-notch aluminum formwork products tailored to meet the evolving needs of our clients.



Vedant Navandar

Director - Strategy & Finance

Vedant embodies the spirit of entrepreneurship, leveraging a rich technical background. Beyond his technical prowess, his innate ability to envision opportunities is remarkable. His keen insights and strategic foresight act as a compass, steering the organization through uncharted territories. Graduating from the prestigious BITS Pilani, and after blending years of corporate experience with a passion for entrepreneurship, Vedant joined Giga, igniting a spark within the team to redefine possibilities.

Our Services

I. Design Solutions and Technical Competency

Turn your Architectural Drawings into precision-crafted Shell Drawings with our expert technical engineers. We prioritize efficiency, collaboration, and customization to ensure your project's unique vision is accurately translated.

- **Salient Features:**
 - **Precision Engineering:** Industry-standard accuracy in every detail
 - **Collaborative Approach:** Work closely with our team for tailored solutions
 - **Efficiency and Timeliness:** Prompt delivery to keep your project on track
 - **Customized Solutions:** Adapted to meet the specific needs of your project

2. Components Manufacturing

Components Manufacturing service transforms design concepts into tangible structures with utmost precision. Our production engineers specialize in executing panels based on meticulously engineered plans provided by our Design team, ensuring seamless integration and adherence to project specifications.

- **Our Component Offerings:**
 - **Standard Panels:**
 - Inclusive of all wall and vertical components.
 - Engineered for uniformity and structural integrity
 - **Deck Panels:**
 - Comprehensive slab panels designed for optimal load-bearing capacity.
 - Executed with precision to meet structural and safety requirements
 - **Special Panels:**
 - Tailored for complexity and uniqueness.
 - Engineered solutions for non-standard and intricate design elements.

Our Services

3. Mockups before Dispatch

Discover efficiency and precision with Giga Aluforms Mockup Service. Our skilled engineers meticulously assemble and validate panels before dispatch, eliminating the need for onsite corrections

- **Benefits:**
 - **Time Savings:** Panels are ready for immediate use upon arrival.
 - **Enhanced Reliability:** Trust in components backed by a thorough mockup process.
 - **Cost-Efficiency:** Minimize project costs by avoiding onsite adjustments.

Giga Aluforms Mockup Service for a seamless and error-free installation process. Choose Giga for precision and hassle-free onsite execution.

Our Clients



Advantages of Aluminium Formwork



Enormous Speed and Efficiency

Achieve 4-day slab cycles



Superior quality of finished surfaces

Smooth Surfaces, Minimal or no Plastering



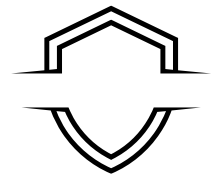
Reduced Labour Requirement

Get peaceful sleeps with lesser headaches



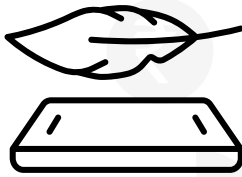
Cost effective in the long run

Reduced labour & finishing costs, higher repetitions



Corrosion and Weather Resistant

resistant to weathering and shrinkage



Lightweight yet Strong

Very high Strength to weight ratio



Environment Friendly

Reusable, recyclable, minimizing waste



Better Thermal & Acoustic Insulation

Improved insulation leading to customer satisfaction



Remarkable Durability

Longevity of Structures & product



WHY T6-6061?

Aluminum Alloy 6061-T6 stands out as an incredibly adaptable heat-treatable alloy, renowned for its suitability in applications demanding medium to high strength. This alloy boasts commendable toughness, making it a go-to choice across various industries.

Its impressive resistance to atmospheric conditions and solid resilience against seawater corrosion further enhance its appeal. This versatility, coupled with its robust strength and durability, solidifies 6061-T6 as a reliable choice for a wide array of uses, making it a popular go-to alloy in numerous sectors.

Applications of 6061 Aluminum Alloy

- Rail coaches
- Aerospace applications (i.e. helicopter rotor skins)
- Rivets
- Towers and pylon
- Truck frames
- Military and commercial bridges
- Ship building operations
- Transport operations

CHEMICAL COMPOSITION OF ALUMINIUM ALLOY 6061- T6			
Chemical Element	%	Chemical Element	%
Aluminium (Al)	95.8	Copper (Cu)	0.4
Manganese (Mn)	0.15	Zinc (Zn)	0.25
Iron (Fe)	0.7	Titanium (Ti)	0.15
Magnesium (Mg)	1.2	Chromium (Cr)	0.35
Silicon (Si)	0.8	Other (Each)	0.05
Others (Total)		0.15	

PHYSICAL & MECHANICAL PROPERTIES				
Material	Property	Values	Unit	
Aluminium	Density	2710	Kg/m ³	Used for wall & slab panel, main beam & end beam
Alloy 6061-T6	Tensile Strength	280	Mpa	
	Yield Strength	235	Mpa	
	Modulus of Elasticity	68900	Mpa	

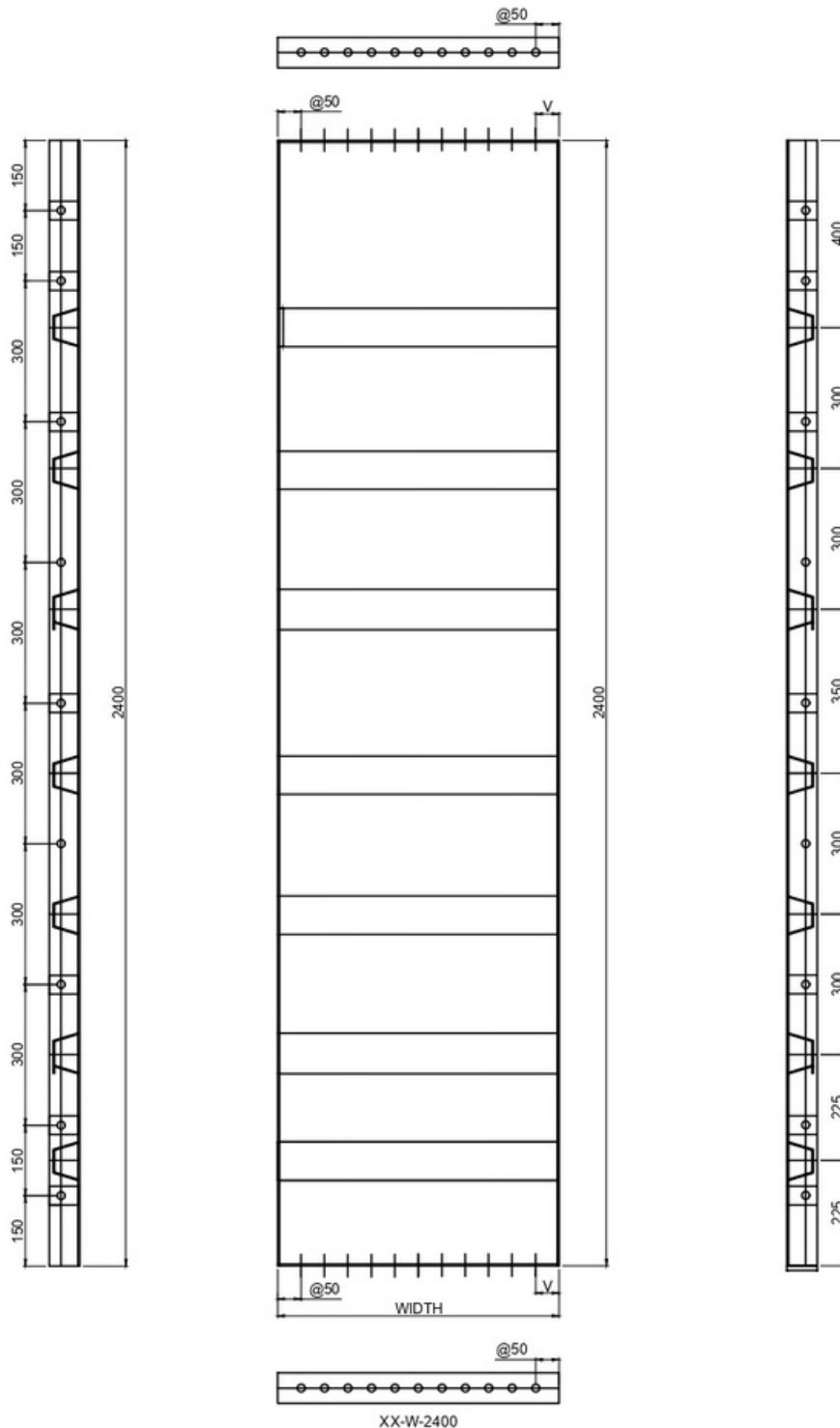
PHYSICAL & MECHANICAL PROPERTIES				
Material	Property	Values	Unit	
Mild Steel	Density	37850	Kg/m ³	Used for Props, Wall & Slab Waller
E-250	Tensile Strength	410	Mpa	
	Yield Strength	250	Mpa	
		1000	Mpa	

Technical specifications

TECHNICAL SPECIFICATIONS	
Specification	Details
Type of Treatment	6061 - T6
Raw Material Sourcing	NATIONAL, GALCO, HINDALCO etc.
Thickness of Sheet	4 mm +- 0.2 mm
Side Rail Specifications	65 mm (8 mm thick)
Overall Weight of Aluminium Formwork System	21-22 kg per sq. m
Type of Fabrication	Extrusion + FSW + MIG Welding
Welding Wire grade	ER5356
Standard Sizes	2400 mm * 600 mm (Wall Panel) 1200 mm * 600 mm (Deck Panel)
Hole Pattern	150 @ 150 (Deck Panel)
Stiffener Types	Big U, Big H and I
Load Rating of Panel	60 kN/m ²
Lacquer Coating	Poly Urethane Acrylic with 25-30 micron
MS Grade	Fe 410WA
Wall Tie Thickness	3 mm * 38 mm
Adjustable Prop	Painted Prop (2 sets)
Reusable quality for further projects Repetitions	65-75% >150 times with Giga Aluforms

Panel specifications

600mm x 2400 mm



GIGA ALUFORMS - STD W 2400

Formwork

List of components



Wall & Deck Panels



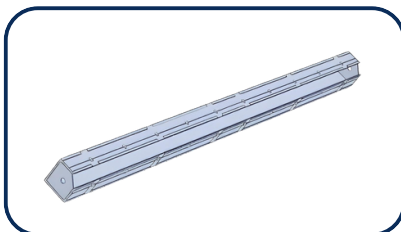
Wall End Panel



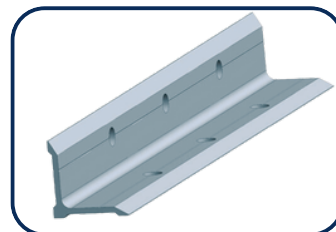
Beam Panel



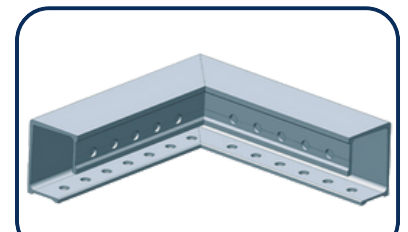
Kicker Panel



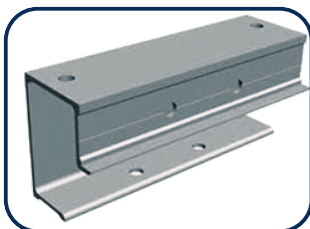
Internal Corner



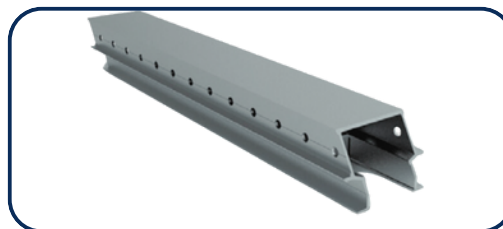
External Corner



Slab In Corner



Slab Length (SL)



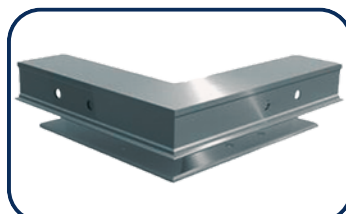
Middle Beam (MB)



Prop Head (PH)



End Beam (EB)



Slab Outer Corner



Rocker

Accessories

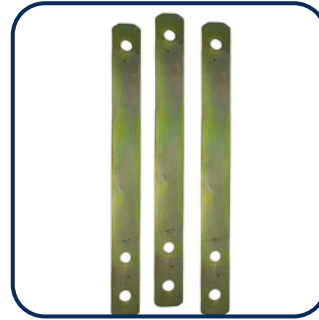
List of components



Stub Pin & Wedges



Long Pin



Wall Ties



MS Prop Support



L-pin



Wall Bracket



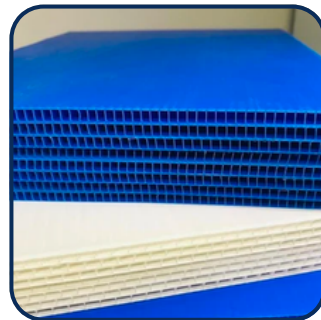
Beam Bar



Kicker Nut and Bolt



Polythene Tubing



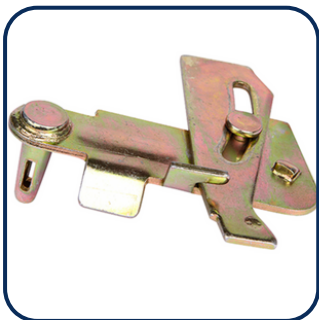
PP Sheet



Alignment Clamp



Hole Bari



Waller Clamp



BKS



Tie Puller



Panel Puller

GIGA's Pioneering Approach

- **Innovative Solutions:** GIGA Aluforms doesn't just supply Aluform; it innovates. The company's R&D wing works tirelessly to enhance formwork systems, making them more adaptable, efficient, and user-friendly. This commitment to innovation means GIGA is always at the forefront, offering solutions that others haven't even thought of.
- **Customized Design:** Recognizing that no two construction projects are the same, GIGA offers tailor-made solutions. Their team of experts collaborates closely with clients to understand their unique needs and deliver Aluform systems that fit the specific requirements of each project.
- **Sustainability at the Core:** GIGA Aluforms is not just changing how buildings are constructed; it's also influencing what they represent. By advocating for and utilizing sustainable construction practices, GIGA is helping create structures that are as environmentally responsible as they are architecturally sound.
- **Education and Training:** Understanding that new technology requires new skills, GIGA invests in extensive training and education for construction professionals. This approach not only ensures optimal use of their systems but also contributes to the broader skill development within the industry.
- **Enhancing Safety Standards:** GIGA's Aluform systems are designed with safety as a priority. Their ease of assembly and dismantling reduces workplace accidents, setting higher safety standards in construction sites.
- **Cost-Effectiveness:** The long-term economic benefits of GIGA's Aluform technology are substantial. By reducing labor costs, shortening project timelines, and minimizing the need for repairs and finishes, GIGA is proving that superior technology can be cost-effective.


Get in touch

Connect with Giga Aluforms for precision in construction. Elevate your projects with our cutting-edge Aluminium formwork solutions. Experience excellence; contact us today for a seamless collaboration. Building success together, one panel at a time.

Giga Executives are available at your service 24*7 via calls and texts. Your relations and convenience matter to us. Please feel free to contact us for any sort of queries and we will be happy to assist you.



Contact Us :

 +91 7020 10 8527, +91 7588 11 6869

 Works: Giga Aluforms, D-5/I,
MIDC Nandgaon Peth, Amravati - 444901

 info@gigaalufoms.com

 www.gigaalufoms.com



Contact Us :

 +91 7020 10 8527, +91 7588 11 6869

 Works: Giga Aluforms, D-5/I,
MIDC Nandgaon Peth, Amravati - 444901

 info@gigaaluforms.com

 www.gigaaluforms.com